

LeadCheck Sampling Swabs

For Fast On-the-Spot Lead Screening

LeadCheck Sampling Test Kits

LeadCheck Surface Sample Kit

The LeadCheck Surface Sample Kit is recognized by three government agencies, including the EPA, FDA, and NIST. In 2010, the EPA mandated testing for lead and the use of lead-safe practices by contractors renovating, repairing, or painting structures built before 1978 (RRP Rule). The EPA has recognized the LeadCheck Kit as a tool to aid contractors in complying with the mandate. The FDA has also reported that LeadCheck swabs were able to detect the presence of or absence of lead on 96.6% of the surfaces sampled. The National Institute of Standards and Technology (NIST) found that LeadCheck swabs were able to detect lead in paint as well as or better than other testing methods. LeadCheck Surface Swab Kits include self-contained sampling swabs with all the materials required for rapid lead screening on surfaces and in liquids. LeadCheck swabs are easy to use; crush, shake, swab, and read the results. RED MEANS LEAD®.

► Fast and easy to use

- 3 easy steps
- No instruments
- Results in minutes

► Convenient

- Can be used almost anywhere (except skin)

► Inexpensive

- No instruments or analysis required

► Easy to interpret

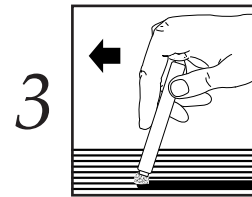
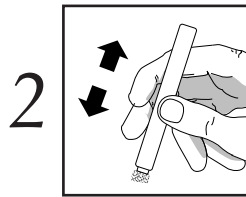
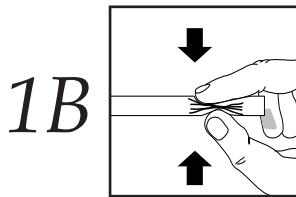
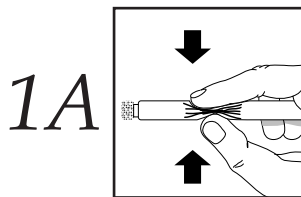
- Positive confirmation procedures included in each kit

► Sensitive lead kit

- Detects lead on 96.6% of surfaces tested

► EPA-recognized instant lead detection test when used by a certified renovator to detect lead-based paint

How to Use the Test Kits



1A. Squeeze the swab to crush the front glass vial inside.

1B. Squeeze the swab to crush the rear glass vial inside.

2. Shake the swab to mix the reagents.

3. While squeezing the swab, rub the surface to be tested for approximately 30 seconds. Within one minute, the swab will turn color if the contaminant is present.

LeadCheck Sampling Kits

For Fast On-the-Spot Lead Screening

Performance Profile

Method:	Sodium rhodizonate
Surfaces:	Wood, metal, plaster or drywall, ceramic glazes, dinnerware, crystal, food cans, solder, toys, dust
Reaction:	Swab tip turns red or pink in presence of lead
Sensitivity:	< 1 µg on solid surfaces 2 ppm in liquids
Crossreactants:	Swab tip turns purple with high concentrations of tin
Interferences:	None

Note: Using LeadCheck swabs on red paint may cause bleeding (red color appearing on the tip). If bleeding occurs, the user will not be able to perform the test.



Ordering Information

Description		Cat. No.
LeadCheck	pk/8	225-2404
	pk/16	225-2404A

For colorimetric determinations of lead on skin and surfaces, see Full Disclosure® Wipes at www.skcinc.com.

SKC Limited Warranty and Return Policy

SKC products are subject to the SKC Limited Warranty and Return Policy, which provides SKC's sole liability and the buyer's exclusive remedy. To view the complete SKC Limited Warranty and Return Policy, go to <http://www.skcinc.com/warranty>.